



AWARDS 2025 European Healthcare Design



9-11
JUNE



CALL FOR ENTRIES

Recognising design excellence in the
healthcare environment

LONDON
ROYAL COLLEGE OF PHYSICIANS

Extended deadline:
12 March 2025

Submit at:
www.europeanhealthcaredesign.eu



Organised by



Lead Awards Partner



Event partners



Judging process and timetable



December 2024

Awards Call for Entries launched

12 March 2025

Extended deadline for Awards entries

March 2025

Judging phase 1: Evaluation and shortlisting of submissions by judging panel

April 2025

Shortlist announcement: The shortlisted submissions are notified and invited to register their participation in the Congress to present their project in Video+Poster format

May 2025

Judging phase 2: Live judging on SALUS TV and presentation of shortlisted projects

10 June 2025

Awards ceremony in final session of the 11th European Healthcare Design Congress

July 2025

Publication of award winners on SALUS Global Knowledge Exchange, European Healthcare Design and Architects for Health websites, and via press announcements in national, professional and social media channels

Image credits, left to right: Front cover: 1. Omagh Hospital and Primary Care Complex (OHPCC), Northern Ireland, designed by Doran Consulting; 2. British Columbia Institute of Technology Health Sciences Centre, Canada, designed by Stantec; 3. University Children's Hospital Freiburg, Germany, designed by Health Team Vienna: Albert Wimmer and Architects Collective
Page 2: Oak Cancer Centre, UK, designed by BDP; Montage Health Ohana Campus, USA, designed by NBBJ
Page 3: British Columbia Institute of Technology Health Sciences Centre, Canada, designed by Stantec

European Healthcare Design 2025 Awards

Recognising design excellence in the healthcare environment

The European Healthcare Design (EHD) 2025 Awards aim to have a significant influence on the creation of healthcare environments that promote health and wellness, embed quality improvement, and support the delivery of treatment and care in an accessible, sustainable and equitable way.

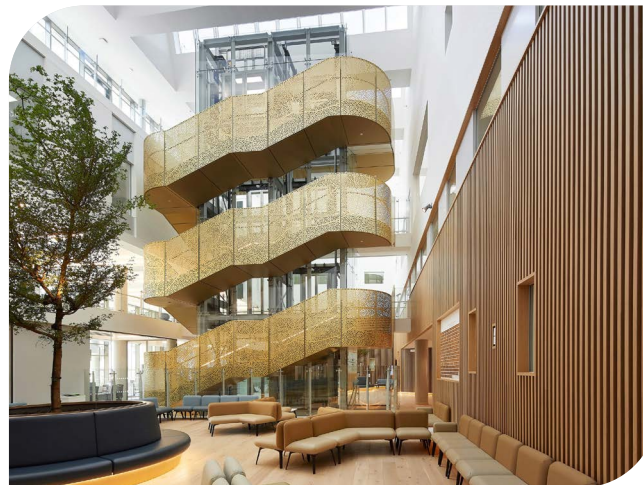
Organised by SALUS Global Knowledge Exchange and Architects for Health, the awards are an integral feature of the 11th European Healthcare Design 2025 Congress, contributing towards the development of knowledge and standards in the design of healthcare environments and infrastructure globally.

Comprising ten categories across primary, community, secondary and tertiary levels of international healthcare provision and infrastructure, the awards are presented to an in-person audience at an illustrious ceremony during the final session of the Congress, followed by a celebratory garden party in the medicinal gardens of the Royal College of Physicians, and streamed online on SALUS TV for delegates to view remotely around the world.



Recipients of the awards will be multidisciplinary project teams that have demonstrated outstanding vision, leadership and knowledge in the design, development and implementation of projects that have positively transformed the delivery and experience of healthcare for the patients and communities they serve.

We look forward to receiving your submissions for the EHD Awards 2025 by the extended deadline of 12 March.



Jaime Bishop

Chair, Architects for Health;
Director, Fleet Architects, UK



Marc Sansom MBA

Managing director, SALUS Global
Knowledge Exchange, UK

Submission process

Who should enter?

The awards are open to international organisations and project teams in the public, private and academic sectors, participating in research, planning, procurement, design, construction and/or operation of healthcare facilities and environments.

Eligibility

Built projects or research programmes completed between 1 January 2024 and 1 June 2025 are eligible to enter. The exceptions are the Future Healthcare Design Award, which only allows submissions of projects currently in design development or under construction; the Design for Sustainable Development Award, which only allows submissions of projects completed before 1 January 2020; and the Health and Life Sciences Award which accepts entries from 1 January 2023 to 1 June 2025. Projects may be entered into multiple categories, provided they are tailored to meet the specific requirements for the judging criteria of each award, but may not be re-entered in the same category in subsequent years.

Evaluation committee

The awards evaluation committee features international researchers and practitioners, who bring specialist multidisciplinary expertise to the specific categories they have been invited to judge. The shortlist and winner of each award are determined by a category chair, supported by two other judges with proven expertise in their field. This robust evaluation methodology ensures a balanced and transparent decision-making process. Any judge associated with any of the entries will withdraw from the relevant part of the adjudication process.

Judging process and criteria

Evaluation Phase 1: The judges will evaluate the submissions consisting of the submission statement and a 10-slide Powerpoint or PDF presentation against a strict methodology and criteria. The judges carry out their evaluations remotely and independently prior to conferring to agree a shortlist.

Evaluation Phase 2: The shortlisted projects will be invited to present virtually to the judges and a live audience in a 10-minute talk followed by questions and answers.

The judges will then finalise their decision prior to the awards ceremony at the main European Healthcare Design 2025 Congress, 9-11 June, when the winners and high commendations will be announced and the awards presented. The specific judging criteria for each award category are available to view below prior to completing a formal online submission.



How to submit

To submit, go to www.europeanhealthcaredesign.eu/awards choose the award category or categories you are entering, then follow these steps:

Step 1: Complete the online entry form and the 1250-word submission statement relevant to the category you are entering

Step 2: Upload a maximum of 10 images and 5 plans of the project both as a 15-slide PPT/ PDF format and in high-resolution jpeg format, and, if available, a video link of the project hosted on either YouTube or Vimeo.

Step 3: Complete payment to register your submission

Important notes: The submission statement and associated materials **MUST** explicitly address the criteria outlined on the submission statement forms. Please refer to the rules of entry for further information on payment and submission requirements.

Rules of entry

Please read the rules carefully. Failure to comply may lead to rejection.

1. Entries must reflect the criteria set out against each award and comprise the following items generated through the online submission process:

i) Completed entry form.

ii) Completed submission statement for the category or categories being entered, providing a project summary and addressing the award criteria in no more than 1250 words in total. Please note that the online form provides more characters than are necessary in each criteria section, which allows for flexibility in the response, but the total word count for the full submission should not exceed 1250 words.

iii) Ten images and five plans of the project, supplied in both a 15-slide Powerpoint or PDF presentation and as high-resolution jpeg images. Submissions for the architectural-based categories should include interior and exterior photographs and any plans and drawings demonstrating key features of the project (eg, a site plan and a floor plan). These illustrations must also be supplied at high-resolution (300+dpi) during Step 2 of the online submission process. Images in the slides may include small text captions, but any text should be removed from the high-resolution images.

iv) The standard fee for each entry is £150 + VAT. Members of Architects for Health, European Health Property Network, Australian Health Design Council and Healthcare Planning Academy are entitled to a discounted submission fee of £125 + VAT. Payment should be made by completing the credit card details in Step 3 of the online submission process. There is no fee for entering the Design Research for Healthcare Design category.

v) Agreement of the commissioning authority, building/project owner or other key authority as appropriate to the project submission.

2. On behalf of the judges, the organisers must be allowed reasonable access to make enquiries or request further information on a shortlisted submission.

3. The judges have absolute discretion to reject any entry that does not comply with the requirements of the rules; to determine the category for which any entry is eligible; and to make or withhold any award to any entry. The judges' decision is final and binding on all entrants, and no discussion or correspondence relating to the judges' decisions will be entered into.

4. It is a condition of entry that all written material, plans and images submitted may be reproduced by SALUS Global Knowledge Exchange and Architects for Health at no cost to themselves in such a form and in such media as deemed appropriate in announcing and/or promoting the 2025 and 2026 awards, and associated media and exhibition activities. This includes entry into the SALUS project database at www.salus.global.

5. All information regarding the results will be embargoed for publication until after the Awards Presentation Ceremony.

6. Entries must arrive by 12 March using the online submission form.

Any questions on the submission process should be directed to info@europeanhealthcaredesign.eu and not directly to the judges

Awards categories and judges



Healthcare Design (Over 25,000 sqm)

Lead judge: Kate Copeland, chair, Australian Health Design Council, Australia

An outstanding healthcare project in a secondary or tertiary care setting that demonstrates high levels of sustainability and urban integration, creates an effective clinical environment, promotes service improvement, and provides a supportive environment for staff, patients and their families.



Mental Health Design

Lead judge: Beatrice Fraenkel, director, Design in Mental Health Network, UK

A mental health project that, through innovative design thinking, achieves a reconciliation between the needs of the patient/resident for a humanistic environment that supports ongoing therapy, care and recovery, and the requirement for appropriate levels of safety, security and supervision.



Design for Adaptation and Transformation

Lead judge: Visiting Professor Jim Chapman, Manchester School of Architecture, UK

An outstanding healthcare project that has had a transformational impact on resolving complex and difficult service design challenges. Submissions may include but are not restricted to conversions, extensions, infills, refurbishments, exterior projects, and field hospitals



Healthcare Design (Under 25,000 sqm)

Lead judge: David Powell, project director, New Velindre Cancer Centre; development director, Alder Hey Children's Hospital, UK

An outstanding healthcare project in a community, primary or tertiary care setting that demonstrates high levels of sustainability and urban integration, transforming the quality of care services in an accessible location, and supporting the integrated needs of staff, patients and the community. Submissions may include but are not restricted to GP premises, primary care centres, urgent care centres, integrated health hubs, community hospitals and multi-use polyclinics.



Future Healthcare Design

Lead judge: Cliff Harvey, joint vice president redevelopment, Grand River Hospital/St. Mary's General Hospital, Canada

A future healthcare project that can demonstrate the potential for outstanding outcomes in masterplanning, place making, wellness, pandemic preparedness and sustainable development, in alignment with the strategic requirements of the healthcare provider to transform their services within the wider community, regional or national health system. Submissions must be 'real' projects developed in design but not yet built to completion. Concept designs will not be considered.



Design for Sustainable Development

Lead judge: Jonathan Erskine, director, European Health Property Network, UK

An exemplar healthcare project completed over 5 years ago that has demonstrated fitness for purpose, flexibility and high performance over time, adapting to new service configurations and meeting international standards in sustainability, including social, economic, human and environmental factors. Any healthcare building or typology is eligible, including reuse or refurbished projects, circular projects, and zero- or negative-carbon projects



Design for Health and Wellness

Lead judge: John Cooper, director, JCA, UK

An inspirational project that encompasses services outside of traditional healthcare settings and, through an alignment of the care philosophy with the design of the environment, helps promote positive behaviours towards healthy living and wellness. Submissions may include but are not restricted to outreach centres, home care, dementia care and continuing care settings.



Health and Life Sciences

Lead judge: Peter Ward, director of real estate development, King's College London and Guy's and St Thomas' NHS Foundation Trust, UK

An outstanding health and life sciences project that promotes the development of medical knowledge and innovation in areas such as training and education, clinical research, informatics and artificial intelligence, drug discovery and healthcare delivery, with a focus to improve patient and population health outcomes.



Interior Design and Arts

Lead judge: Ruth Charity, arts co-ordinator, artlink, Oxford University Hospitals NHS FT, UK

An inspirational project that demonstrates exceptional skill in creating a compassionate healthcare environment that reflects and communicates the values of the healthcare provider through the integrated application of interior design with the visual arts.



Design Research Project

Lead judge: Göran Lindahl, associate Professor/ Head of Division Building Design, Architecture and Civil Engineering, Chalmers University, Sweden

An independently assessed, completed and novel research study that can demonstrate innovation, relevance and practical application. The research should be original, showing critical thinking in a new field of investigation or by applying innovative methods and analysis to existing issues.

For further enquiries on the awards programme, awards sponsorship or exhibition opportunities at the Congress, contact:

info@europeanhealthcaredesign.eu
www.europeanhealthcaredesign.eu



AWARDS 2025
European Healthcare Design